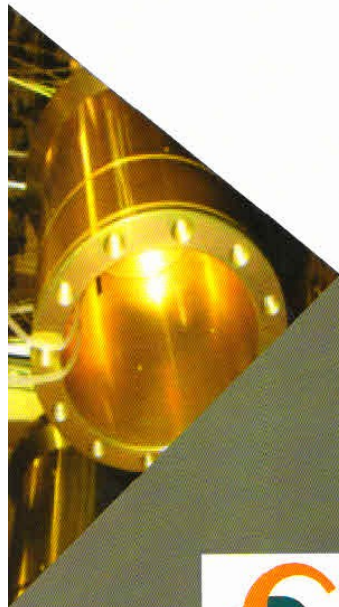


Branches

- **Pune**
- **Delhi**
- **Banglore**
- **Chennai**
- **Kolkatta**



Factory Address: A359 Mahape, Near Ambar HotelNavi Mumbai- 400710

Mobile No: 9819655037 **Customer Care No:** +91 22 27780442

Website: www.addchemindustries.com

Email Id:- info@addchemindustries.com / purchase@addchemindustries.com /

sales@addchemindustries.com / accounts@addchemindustries.com /

manoj@addchemindustries.com



Trust for Best Future
Since - 2010

PRODUCT INFORMATION GUIDE

Services

- Admixture
- Grout's
- Water Proofing
- MRA (Mould relating agent)
- SBR Latex
- ACI Acrylic
- Epoxy Coating



ADD CHEM INDUSTRIES

Room No. 506, Prisha Apartment, Rabale,
Behind Kamala Arcade, Navi Mumbai-400703.

Company Profile

Incorporated in the year 2010, at Navi Mumbai (Maharashtra, India), "Add Chem Industries" is the reputed manufacturer and service provider of an excellent quality array of Textile Chemicals, Phosphating Chemicals, Rust Preventives Oil, Hydrophilic Softeners, Cleaner Degreaser, Chromating Motor Housing, Construction Chemicals, Polyurethane Construction Adhesive, Speciality Coating Services, Stainless Steel Electropolishing Service and many more. The provided range is processed using quality-approved chemicals and standard processing methods in tune with industry set norms at our highly-established processing unit. Our qualitative range is highly used in various industries for its wide applications. Our provided range of products is extremely appreciated in the industry for their pleasant odor, uniform composition, long shelf life, safe usage and good solubility. In addition, we present this range at a cost effective price range.

Owing to the hard working and dedication of our talented professionals, we have been able to serve the huge demands of our product array in the industry within stipulated time frame. Our experts work in a synchronized fashion to attain the set objectives and goals of the organization. In order to provide a faultless range and to attain maximum customers' satisfaction, our provided range is firmly checked against vast parameters of quality by our quality controllers. Due to our transparent business deals, easy payment modes and moral business values, we have been able to attain a unique position in the domain.

Under the valuable guidance of Mr. Manoj Gapat (Managing Director), we have attained popularity and fame in this industry. Backed by a team of talented and experienced workforce, modern processing techniques and ultra modern processing unit, we are able to provide this supreme quality array to our customers.





Our Team



The team has a unique capacity to initiate and innovate generating new knowledge and ideas. All our products have been developed through in house Research and Development. An industrial experience has helped us carve a niche as a reliable manufacturer of a wide range of Specialty Chemicals. These chemicals are widely used for Surface Treatment Applications and have earned us a growing reputation in the industry owing to their impeccable quality.

Our product range includes Concrete Plasticizers, Textile Chemicals, Rust Preventives Oil, Hydrophilic Softeners, Cleaner Degreaser, Chromating Motor Housing, Construction Chemicals, Polyurethane Construction Adhesive and many more. These chemicals are widely demanded in various sectors that comprise Automobile & Ancillary, Consumer Durables, Furniture & Fixtures, Machinery & Machine Tools, Cold Forming (wire, tube drawing, extrusion, forging, etc.), Defense, Railways, and Marine & Aviation.

Why us



Since our establishment, we are involved in offering a quality approved array. Our moral business values and in-depth knowledge in this domain has enabled us to garner huge customers across the country. In addition to this, we are highly appreciated and applauded by the customers for on time delivery of the consignments. Some factors, for which our customers give preference to us over our competitors, are given below:

- Complete customer satisfaction*
- Timely delivery*
- Customization facility*
- Competitive price*
- Adherence to Quality*
- Standard as well as customized packaging facility*

ACI EPOXY COATING

ACI EP SL (SURFACE LAYER) / UL (UNDER LAYER) PRIMER BASE

DESCRIPTION

ACI EP UL is a solvent free system based on epoxy resin, elastomer and curing agents specially selected for their ability to without chemical attack.

FEATURES / ADVANTAGES

It is durable with low maintenance costs.
Available in a wide range of colors to improve the working environment and kindly slip hazard areas.
Impervious finish provides early clean surface.

APPLICATION AREAS

Provides high build, hard wearing, chemical & abrasion resistant floor finish.
It can be used as slip resistant coating in wet areas where a high degree of chemical resistance is required e.g. breweries, dairies, soft drink production plants etc.



MIXING RATIO

Part I : Part II
80 : 20 By weight

COVERAGE
3 - 4 sq mtr / kg

PACKING
1kg & 5 kg

SHELF LIFE
1 Year

ACI EPOXY COATING

ACI HD SL (SURFACE LAYER) / UL (UNDER LAYER) HARDNER

DESCRIPTION

ACI EP UL is a solvent free system based on epoxy resin, elastomer and curing agents specially selected for their ability to without chemical attack.

FEATURES / ADVANTAGES

It is durable with low maintenance costs.
Available in a wide range of colors to improve the working environment and kindly slip hazard areas.
Impervious finish provides early clean surface.

APPLICATION AREAS

Provides high build, hard wearing, chemical & abrasion resistant floor finish.
It can be used as slip resistant coating in wet areas where a high degree of chemical resistance is required e.g. breweries, dairies, soft drink production plants etc.



MIXING RATIO

Part I : Part II
80 : 20 By weight

COVERAGE
3 - 4 sq mtr / kg

PACKING
1kg & 5 kg

SHELF LIFE
1 Year

SURFACE TREATMENT / CURING COMPOUND / CLEANING & MOULD RELEASING AGENTS

PRIMER CLEANING & ACID ETCHING AGENT

DESCRIPTION

It is a concentrated cleaning agent in liquid form. It is a modified mineral acid with special additives. It aids the removal of cement dust, concrete, mortar & lime remainders. It is suitable for etching concrete floors & surfaces before applying surface coating.

FEATURES / ADVANTAGES

Quickly removes the cement dust, concrete & mortar remainders & stains. It can be used even in the area in food industry.
It is supplied in concentrated form & dilution with water has to be done on the site hence, it is economical.

APPLICATION AREAS

Used for removal of hardened concrete & mortar from machinery equipment & tools.
Used for surface preparation prior to application of surface coatings.
Used as cleaning agent to remove cement, concrete dust on ceramic tiles, granite stone, etc.
Used to remove cement, concrete dust in food & pharmaceutical industries, drinking water storage areas, swimming pools.
Used for cleaning formwork, moulds ready mixed trucks, concrete mixers etc.
Used for removal of stains on wood, urubber, glass, plastic & metals except zinc & galvanised steel.



COVERAGE
Depends on usage.

PACKING
5 ltr., 20 ltr.

SHELF LIFE
1 Year





ADMIXTURE / PLASTISIZOR

ACI HI PC 701 (Polycarboxylate Ether base)

DESCRIPTION

Super Plasticizer with retention for high performance concrete based on Poly-carboxylic Ether.

SPECIFICATION

ASTM C-494
Type G
IS 9103 : 1999

FEATURES / USES

Ready Mix Concrete for Higher grades with more retention time.
Self Compacting Concrete.
High Strength Concrete.
High Performance Concrete.
Precast / Pre-stressed Concrete.
Pumped Concrete.

TYPICAL APPLICATION

Excellent dispersion resulting in high workability and superb slump retention.
Increases early & ultimate strengths.
Increases Flexural strength & E-modulus.
Can be placed and compacted in congested reinforcements without vibration.
Reduced labour requirements.
Increases durability & impermeability
Improved surface finish.
Ideal for use in self-compacting Concrete along with PDC-VMA, Viscosity Modifying Admixture.

TECHNICAL INFORMATION

Colour - Brownish Clear liquid
Sp. Gravity @30° C - 1.080 ± 0.02
Chloride content - Nil
PH - Min 6
Base - Modified Poly-carboxylic Ether
Shelf life - 1 Year



10.9 Master Plast HRA

DOSAGE COVERAGE

0.5 to 12 kg / 100 kg
of cement
(Depending on site requirements)

PACKING

1kg, 5kg, 20kg,
50kg, &
250kg/Bulk (9mt)

ACI HI PC 702 (Polycarboxylate Ether base)

DESCRIPTION

Super Plasticizer with retention for high performance concrete based on Poly-carboxylic Ether.

SPECIFICATION

ASTM C-494
Type G
IS 9103 : 1999

FEATURES / USES

Ready Mix Concrete for Higher grades with more retention time.
Self Compacting Concrete.
High Strength Concrete.
High Performance Concrete.
Precast / Pre-stressed Concrete.
Pumped Concrete.

TYPICAL APPLICATION

Excellent dispersion resulting in high workability and superb slump retention.
Increases early & ultimate strengths.
Increases Flexural strength & E-modulus.
Can be placed and compacted in congested reinforcements without vibration.
Reduced labour requirements.
Increases durability & impermeability
Improved surface finish.
Ideal for use in self-compacting Concrete along with PDC-VMA, Viscosity Modifying Admixture.

TECHNICAL INFORMATION

Colour - Brownish Clear liquid
Sp. Gravity @30° C - 1.080 ± 0.02
Chloride content - Nil
PH - Min 6
Base - Modified Poly-carboxylic Ether
Shelf life - 1 Year



10.9 Master Plast HRA

DOSAGE COVERAGE

0.5 to 12 kg / 100 kg
of cement
(Depending on site requirements)

PACKING

1kg, 5kg, 20kg,
50kg, &
250kg/Bulk (9mt)

ACI HI PC 703 (Polycarboxylate Ether base)

DESCRIPTION

Super Plasticizer with retention for high performance concrete based on Poly-carboxylic Ether.

SPECIFICATION

ASTM C-494
Type G
IS 9103 : 1999

FEATURES / USES

Ready Mix Concrete for Higher grades with more retention time.
Self Compacting Concrete.
High Strength Concrete.
High Performance Concrete.
Precast / Pre-stressed Concrete.
Pumped Concrete.

TYPICAL APPLICATION

Excellent dispersion resulting in high workability and superb slump retention.
Increases early & ultimate strengths.
Increases Flexural strength & E-modulus.
Can be placed and compacted in congested reinforcements without vibration.
Reduced labour requirements.
Increases durability & impermeability
Improved surface finish.
Ideal for use in self-compacting Concrete along with PDC-VMA, Viscosity Modifying Admixture.

TECHNICAL INFORMATION

Colour - Brownish Clear liquid
Sp. Gravity @30° C - 1.080 ± 0.02
Chloride content - Nil
PH - Min 6
Base - Modified Poly-carboxylic Ether
Shelf life - 1 Year



10.9 Master Plast HRA

DOSAGE COVERAGE

0.5 to 12 kg / 100 kg
of cement
(Depending on site requirements)

PACKING

1kg, 5kg, 20kg,
50kg, &
250kg/Bulk (9mt)



ADMIXTURE / PLASTICIZERS

ACI LW PC 655

DESCRIPTION

Super Plasticizer for high performance concrete based on Poly-carboxylic Ether.

SPECIFICATION

ASTM C-494
Type G
IS 9103: 1999

TYPICAL APPLICATION

Ready Mix Concrete for Higher grades with more retention time.
Self Compacting Concrete.
High Strength Concrete.
High Performance Concrete.
Precast / Pre-stressed Concrete.
Pumped Concrete.

FEATURES / USES

Excellent dispersion resulting in high workability and superb slump retention.
Increases early & ultimate strengths.
Increases Flexural strength & E-modulus.
Can be placed and compacted in congested reinforcements without vibration.
Reduced labour requirements.
Increases durability & impermeability
Improved surface finish.
Ideal for use in self-compacting Concrete along with PDC-VMA, Viscosity Modifying Admixture.

TECHNICAL INFORMATION

Colour - Yellowish Clear liquid
Sp. Gravity @30° C - 1.100 ± 0.02
Chloride content - Nil
PH - Min 6
Base - Modified Poly-carboxylic Ether
Shelf life - 1 Year



DOSAGE COVERAGE

0.5 to 12 kg / 100 kg
of cement
(Depending on site requirements)

PACKING

1kg, 5kg, 20kg,
50kg, &
250kg / Bulk (9mt)

ACI LW PC 355

DESCRIPTION

Super Plasticizer for high performance concrete based on Poly-carboxylic Ether.

SPECIFICATION

ASTM C-494
Type G
IS 9103: 1999

TYPICAL APPLICATION

Ready Mix Concrete for Higher grades with more retention time.
Self Compacting Concrete.
High Strength Concrete.
High Performance Concrete.
Precast / Pre-stressed Concrete.
Pumped Concrete.

FEATURES / USES

Excellent dispersion resulting in high workability and superb slump retention.
Increases early & ultimate strengths.
Increases Flexural strength & E-modulus.
Can be placed and compacted in congested reinforcements without vibration.
Reduced labour requirements.
Increases durability & impermeability
Improved surface finish.
Ideal for use in self-compacting Concrete along with PDC-VMA, Viscosity Modifying Admixture.

TECHNICAL INFORMATION

Colour - Yellowish Clear liquid
Sp. Gravity @30° C - 1.100 ± 0.02
Chloride content - Nil
PH - Min 6
Base - Modified Poly-carboxylic Ether
Shelf life - 1 Year



DOSAGE COVERAGE

0.5 to 12 kg / 100 kg
of cement
(Depending on site requirements)

PACKING

1kg, 5kg, 20kg,
50kg, &
250kg / Bulk (9mt)

ACI LW PC 350

DESCRIPTION

Super Plasticizer for high performance concrete based on Poly-carboxylic Ether.

SPECIFICATION

ASTM C-494
Type G
IS 9103: 1999

TYPICAL APPLICATION

Ready Mix Concrete for Higher grades with more retention time.
Self Compacting Concrete.
High Strength Concrete.
High Performance Concrete.
Precast / Pre-stressed Concrete.
Pumped Concrete.

FEATURES / USES

Excellent dispersion resulting in high workability and superb slump retention.
Increases early & ultimate strengths.
Increases Flexural strength & E-modulus.
Can be placed and compacted in congested reinforcements without vibration.
Reduced labour requirements.
Increases durability & impermeability
Improved surface finish.
Ideal for use in self-compacting Concrete along with PDC-VMA, Viscosity Modifying Admixture.

TECHNICAL INFORMATION

Colour - Yellowish Clear liquid
Sp. Gravity @30° C - 1.100 ± 0.02
Chloride content - Nil
PH - Min 6
Base - Modified Poly-carboxylic Ether
Shelf life - 1 Year



DOSAGE COVERAGE

0.5 to 12 kg / 100 kg
of cement
(Depending on site requirements)

PACKING

1kg, 5kg, 20kg,
50kg, &
250kg / Bulk (9mt)

ADMIXTURE / PLASTICIZERS

ACI MID PC 530

DESCRIPTION

Super Plasticizer with retention for high performance concrete & Self Compacting concrete based on Poly-carboxylic Ether

SPECIFICATION

ASTM C-494
Type G
IS 9103: 1999

TYPICAL APPLICATION

Ready Mix Concrete for Higher grades with more retention time.
Self Compacting Concrete.
High Strength Concrete.
High Performance Concrete.
Precast / Pre-stressed Concrete.
Pumped Concrete.

FEATURES / USES

Excellent dispersion resulting in high workability and superb slump retention.
Increases early & ultimate strengths.
Increases Flexural strength & E-modulus.
Can be placed and compacted in congested reinforcements without vibration.
Reduced labour requirements.
Increases durability & impermeability
Improved surface finish.
Ideal for use in self-compacting Concrete along with PDC-VMA, Viscosity Modifying Admixture.

TECHNICAL INFORMATION

Colour - Yellowish Clear liquid
Sp. Gravity @30° C - 1.110 ± 0.02
Chloride content - Nil
PH - Min 6
Base - Modified Poly-carboxylic Ether
Shelf life - 1 Year



DOSAGE COVERAGE

0.5 to 12 kg / 100 kg
of cement
(Depending on site requirements)

PACKING

1kg, 5kg, 20kg,
50kg, &
250kg / Bulk (9mt)

ACI MID PC 550

DESCRIPTION

Super Plasticizer with retention for high performance concrete & Self Compacting concrete based on Poly-carboxylic Ether

SPECIFICATION

ASTM C-494
Type G
IS 9103: 1999

TYPICAL APPLICATION

Ready Mix Concrete for Higher grades with more retention time.
Self Compacting Concrete.
High Strength Concrete.
High Performance Concrete.
Precast / Pre-stressed Concrete.
Pumped Concrete.

FEATURES / USES

Excellent dispersion resulting in high workability and superb slump retention.
Increases early & ultimate strengths.
Increases Flexural strength & E-modulus.
Can be placed and compacted in congested reinforcements without vibration.
Reduced labour requirements.
Increases durability & impermeability
Improved surface finish.
Ideal for use in self-compacting Concrete along with PDC-VMA, Viscosity Modifying Admixture.

TECHNICAL INFORMATION

Colour - Yellowish Clear liquid
Sp. Gravity @30° C - 1.110 ± 0.02
Chloride content - Nil
PH - Min 6
Base - Modified Poly-carboxylic Ether
Shelf life - 1 Year



DOSAGE COVERAGE

0.5 to 12 kg / 100 kg
of cement
(Depending on site requirements)

PACKING

1kg, 5kg, 20kg,
50kg, &
250kg / Bulk (9mt)

ACI MID PC 560

DESCRIPTION

Super Plasticizer with retention for high performance concrete & Self Compacting concrete based on Poly-carboxylic Ether

SPECIFICATION

ASTM C-494
Type G
IS 9103: 1999

TYPICAL APPLICATION

Ready Mix Concrete for Higher grades with more retention time.
Self Compacting Concrete.
High Strength Concrete.
High Performance Concrete.
Precast / Pre-stressed Concrete.
Pumped Concrete.

FEATURES / USES

Excellent dispersion resulting in high workability and superb slump retention.
Increases early & ultimate strengths.
Increases Flexural strength & E-modulus.
Can be placed and compacted in congested reinforcements without vibration.
Reduced labour requirements.
Increases durability & impermeability
Improved surface finish.
Ideal for use in self-compacting Concrete along with PDC-VMA, Viscosity Modifying Admixture.

TECHNICAL INFORMATION

Colour - Yellowish Clear liquid
Sp. Gravity @30° C - 1.110 ± 0.02
Chloride content - Nil
PH - Min 6
Base - Modified Poly-carboxylic Ether
Shelf life - 1 Year



DOSAGE COVERAGE

0.5 to 12 kg / 100 kg
of cement
(Depending on site requirements)

PACKING

1kg, 5kg, 20kg,
50kg, &
250kg / Bulk (9mt)



ADMIXTURE / PLASTICIZERS

ACI 4010 UT

DESCRIPTION

Super Plasticizer for high performance concrete based on SULFONATED NAPHTHALENE FORMALDEHYDE BASED.

SPECIFICATION

ASTM C-494 Type F
BS 5057
Part 3 - 1982

FEATURES / USES

Production of self-compacting.
Flow-able concrete.
In complicated form work and sections heavily congested with reinforcement
Pre-cast concrete elements.
For high early strength concrete.

TYPICAL APPLICATION

Concrete of similar work ability can be produce with 25% less water. Helps in reduction or elimination the need for compaction. Water reducing properties help in achieving increased compressive, tensile and flexural strength of concrete. High early strength helps removal of the work/mould early- saving in time.

TECHNICAL INFORMATION

Colour - Dark brown liquid.
Sp. Gravity of 25° C ± 2C° -1.22 ± 0.01
Air entrainment - Maximum 1%
Chloride content-Nill to BS 5075:1982
PH -7 to 8



DOSAGE COVERAGE

Increase in the work ability of concrete
Retardation of initial setting time slight
increase in air entrainment Does not affect the ultimate concrete strength

PACKING

1kg, 5kg, 20kg,
50kg, &
250kg/Bulk (9mt)

ACI 4011 UT

DESCRIPTION

Super Plasticizer for high performance concrete based on SULFONATED NAPHTHALENE FORMALDEHYDE BASED.

SPECIFICATION

ASTM C-494 Type F
BS 5057
Part 3 - 1982

FEATURES / USES

Production of self-compacting.
Flow-able concrete.
In complicated form work and sections heavily congested with reinforcement
Pre-cast concrete elements.
For high early strength concrete.

TYPICAL APPLICATION

Concrete of similar work ability can be produce with 25% less water. Helps in reduction or elimination the need for compaction. Water reducing properties help in achieving increased compressive, tensile and flexural strength of concrete. High early strength helps removal of the work/mould early- saving in time.

TECHNICAL INFORMATION

Colour - Dark brown liquid.
Sp. Gravity of 25° C ± 2C° -1.22 ± 0.01
Air entrainment - Maximum 1%
Chloride content-Nill to BS 5075:1982
PH -7 to 8



DOSAGE COVERAGE

Increase in the work ability of concrete
Retardation of initial setting time slight
increase in air entrainment Does not affect the ultimate concrete strength

PACKING

1kg, 5kg, 20kg,
50kg, &
250kg/Bulk (9mt)

ACI 4012 UT

DESCRIPTION

Super Plasticizer for high performance concrete based on SULFONATED NAPHTHALENE FORMALDEHYDE BASED.

SPECIFICATION

ASTM C-494 Type F
BS 5057
Part 3 - 1982

FEATURES / USES

Production of self-compacting.
Flow-able concrete.
In complicated form work and sections heavily congested with reinforcement
Pre-cast concrete elements.
For high early strength concrete.

TYPICAL APPLICATION

Concrete of similar work ability can be produce with 25% less water. Helps in reduction or elimination the need for compaction. Water reducing properties help in achieving increased compressive, tensile and flexural strength of concrete. High early strength helps removal of the work/mould early- saving in time.

TECHNICAL INFORMATION

Colour - Dark brown liquid.
Sp. Gravity of 25° C ± 2C° -1.22 ± 0.01
Air entrainment - Maximum 1%
Chloride content-Nill to BS 5075:1982
PH -7 to 8



DOSAGE COVERAGE

Increase in the work ability of concrete
Retardation of initial setting time slight
increase in air entrainment Does not affect the ultimate concrete strength

PACKING

1kg, 5kg, 20kg,
50kg, &
250kg/Bulk (9mt)



SURFACE TREATMENT / CURING COMPOUND / CLEANING & MOULD RELEASING AGENTS

ACI MRA

DESCRIPTION

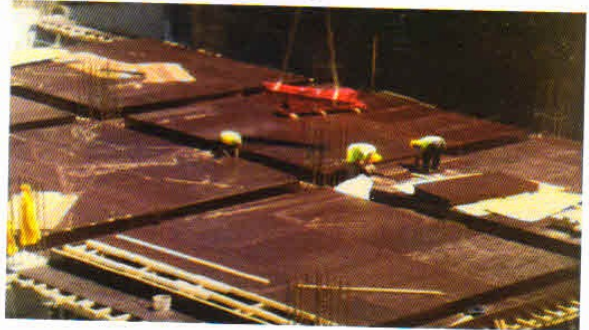
ACI MRA is a high quality solvent free mould releasing agent. It forms a film which enables easy stripping of form work from concrete. The unique formulation of ACI MRA provides fair faced stain free concrete together with easy stripping of moulds.

APPLICATION AREAS

All types of form work e.g. steel & wood
Precast industry

FEATURES / ADVANTAGES

Plasters, screed can be applied later on the surface as MASTEROL-MRA does not give bonding problem to the concrete.
Provides high quality concrete surface with sharp corners.
Can be used in all kinds of moulds.
Protects wooden form work absorbing water & swelling.
Protects steel form work against corrosion.
Extends form work life-easier cleaning between uses.
Minimizes surface staining.



COVERAGE

30-50 sq. mtr. / ltr depending upon substrate nature.

PACKING

20 ltr., 200 ltr.

SHELF LIFE

1 Year

ACI WB-3, WB-2M

ACI WB, WB-2M (WAX BASE)

DESCRIPTION

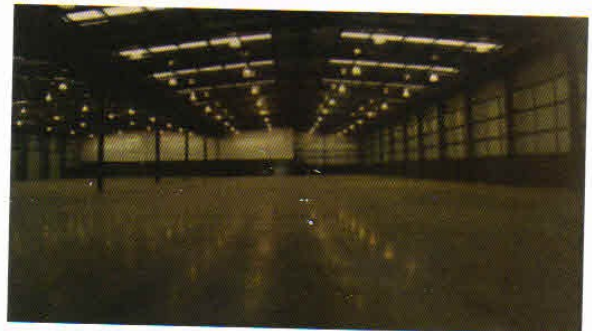
ACI WB, WB-2M is a single component low viscosity wax emulsion which incorporates a special alkali reactive emulsion breaking system. This system ensure that the emulsion breaks down to form a non penetrating continuous film immediately upon contact with a cementitious surface.

FEATURES / ADVANTAGES

Solar refractive
Minimises risk of drying shrinkage cracks & dusty surfaces.
No risk of poor curing & ensures that cement hydrates efficiently.
Ensures achievement of desired strength.

APPLICATION AREAS

Industrial floor slabs
Exterior pavements
Wall & columns
Parking & garages
Terrazzo floors
Warehouses
Dry shake hardened floors, etc.



COVERAGE

5 - 7 sq. mtr. / ltr depending on wind, humidity & temperature

PACKING

5 ltr., 20 ltr., 200 ltr.

SHELF LIFE

6 Months

FLOOR COATING / HARDNERS / HYGIENE COATINGS

ACI -52

DESCRIPTION

It is a single component modified acid with different additive base.

FEATURES / ADVANTAGES

Removes the rust & prevents rust formation.
Easy to apply with brush, roller, spray etc.
It makes the substrate clean for painting.

APPLICATION AREAS

Used for removal of rust from metals like structural steel, rib, bar, nail, refinery, metal fabrication & maintenance workshop etc.

COVERAGE

Coverage is approx. 100 sq. ft. / litre but may vary depending on the extent of rusting & roughness of the surface.



PACKING

1 ltr., 5 ltr., 20 ltr.

SHELF LIFE

1 Year





ACI SUPER LATEX (SBR BASE)

ACI - SBR

DESCRIPTION

Polymer Modifier for Cementitious Systems

SPECIFICATION

TYPICAL APPLICATION

Rendering and coating
For concrete repairs
For Structural repairs
As a bonding agent for patch repair
Tile bonding
Crack filling primer
For Screeds, Renders, Toppings
For waterproofing coating
For cement injection coating

FEATURES / USES

Excellent adhesion to concrete, masonry and reinforcement.
Increases flexural tensile and mechanical strength.
Improves freeze thaw resistance.
Excellent water resistance.
Easy to apply and economical resistance to weathering and chemical attack.
Compatible with all hydraulic cements.
Reduces W/C ratio increases durability and toughness.

TECHNICAL INFORMATION

Form : Liquid
colour : White
S.P. gravity : 1.01
pH : 9.0+1
MFT : 10c
Chloride : Nil



DOSAGE COVERAGE
10 liter / 50kg cement

PACKING
5, 20, 50,
100 and
210 liter drums

ACI SUPER ACRYLIC (ACRYLIC BASE)

ACI - AR (ACRYLIC)

DESCRIPTION

It is a single component, 100% pure acrylic based, highly engineered, elastomeric, insulating solar reflective coating that incorporates 'ceramic' technology for thermal reflection and substrate insulation.

APPLICATIONS AREAS

Sunshield-100 is mainly designed for:
Exterior R.C.C. surface of masonry walls or facades.
Asbestos sheets, sloping roofs, farm sheds.
Water storage tanks of metal, plastic, cement, etc.
Warehouses, godowns, cold storages

FEATURES / ADVANTAGES

Sunshield-100 gives temprature difference upto 10° C.
Resistance to chalking & flaking.
Ultra violet resistance for outstanding durability.
Available in attractive light shades, white is recommended.
Aesthetic appeal & protection against water & carbon dioxide penetration.
Water borne chemistry for uncomplicated handing & clean up.
Suitable for brush methods of application & optimized rheology for high film build in one coat.
" Breathability" for preventing moisture build up in walls & roofs. (MICROPOROUS)
Can be applied on slightly damp surfaces too.



COVERAGE
Coat applied on plastic & Metal
20-25 sq ft / ltr / 2 coat
Asbestos Roof
20-30 sq ft / ltr / 2 coat
Concrete Substrate
20-30 sq ft / ltr / 2 coat

PACKING
1 ltr., 4 ltr.,
20 ltr.

SHELF LIFE
1.5 Years

ACI SUPER SNF (SULFONATED NAPHTHALENE FORMALDEHYDE BASED)

ACI SUPER SNF

SULFONATED NAPHTHALENE FORMALDEHYDE BASED

TECHNICAL INFORMATION

S.P. gravity : 1.23 - 1.26 g/ltr.
pH : 7.9
Velocity : 30 - 80 sec.

